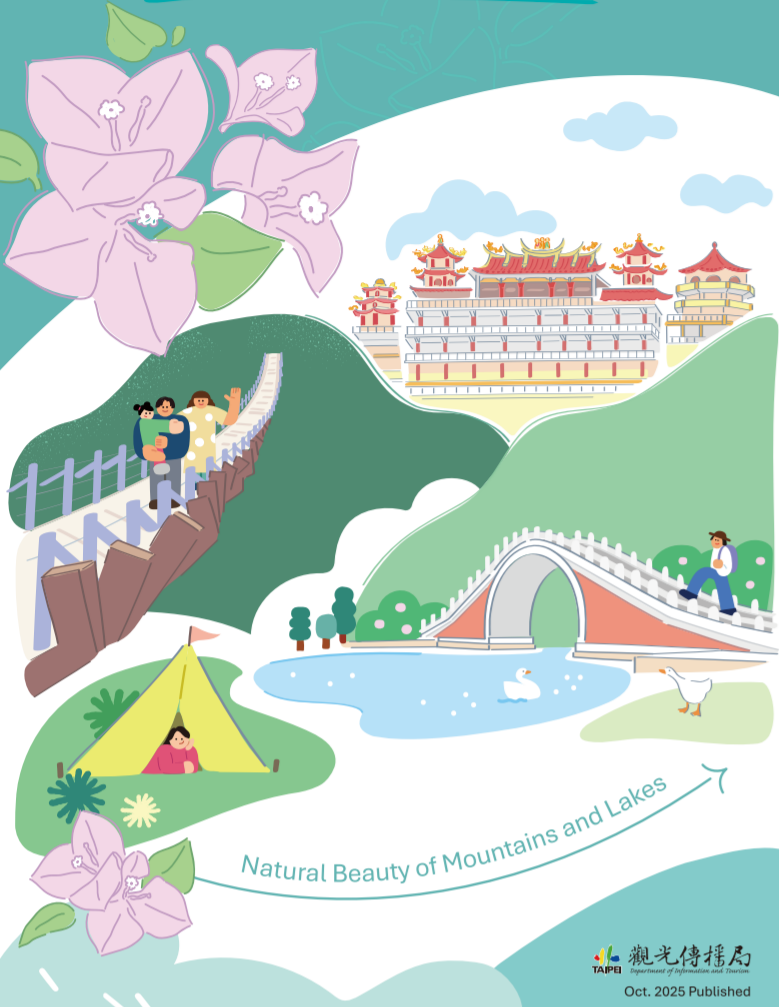


# TAIPEI Neihu



Natural Beauty of Mountains and Lakes

觀光傳播局  
Taipei  
Oct. 2025 Published

- Ecological Sanctuary
- Lakeside Parks
- Tech Hub



Offering picturesque scenery with attractions like the Dahu and Bihu parks, Neihu District is a perfect natural getaway. The thriving Neihu Technology Park is also a place with a wealth of dining choices. In Neihu, a harmonious mix of modern life and nature awaits, whether you are keen on enjoying nature, savoring nice food, or exploring historical sites.

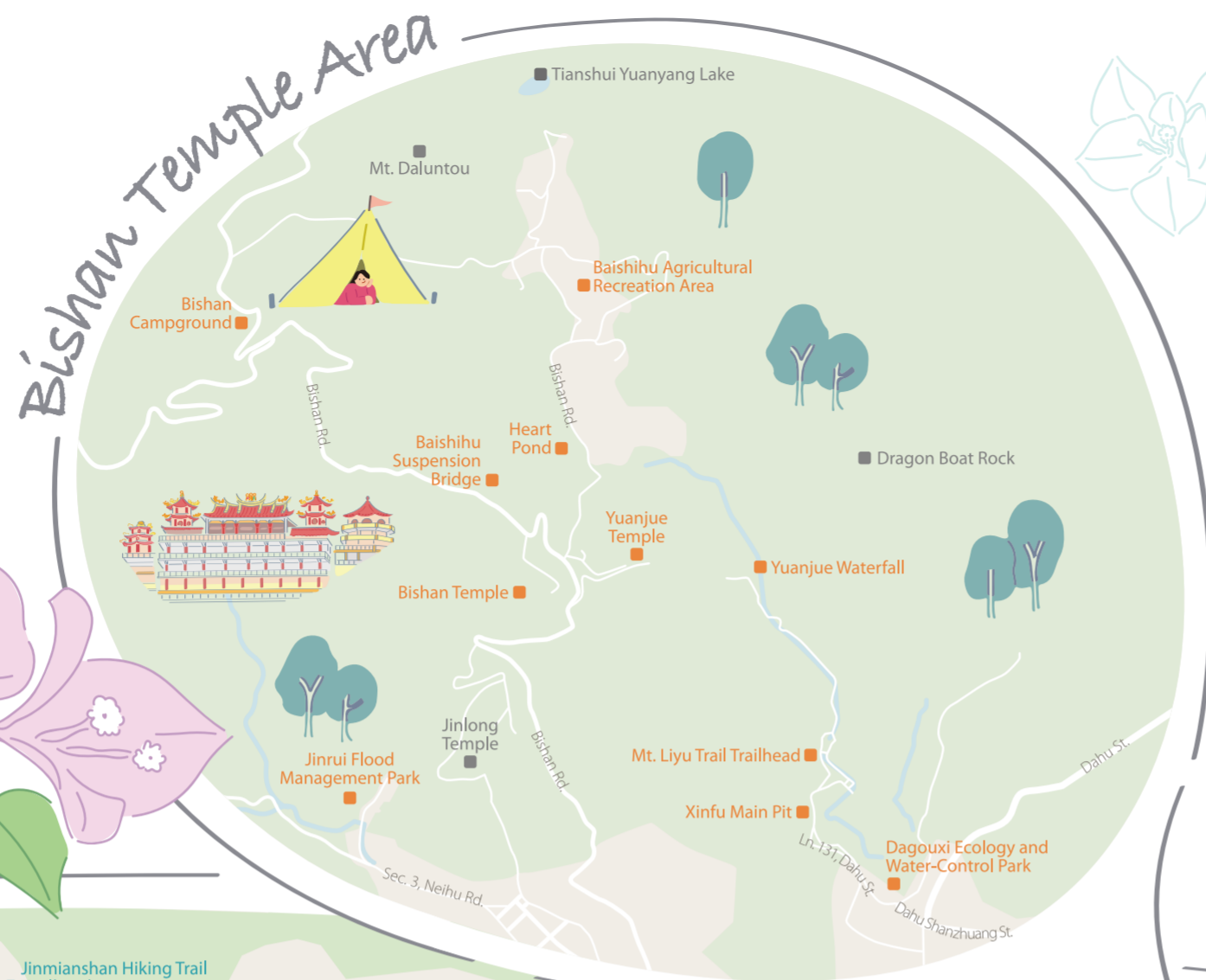
District Flower



Information contained in this publication is subject to change after release.

AD

## Bishan Temple Area



## Neihu

- Highlight
- Nature
- Food
- Tourist Spots
- Others
- 2025 Michelin
- Taipei Metro



Online Map

## Exciting Events

### LOHAS Cherry Blossom Festival

- February
- Lohas Park

Get a close-up view of hundreds of Taiwan, double-layered, Showa, Yoshino, and various other cherry blossoms here. The event features light shows, market stalls, and live music, making it perfect for appreciating the floral beauty.



### Neihu Strawberry Festival

- December-early May
- Baishihu Agricultural Recreation Area, Dahu St. and Antai St.

Enjoy strawberry-picking at farms and participate in hands-on workshops to create strawberry jam, pancakes, and wood-fired pizza. Local shops also sell strawberry-themed treats and souvenirs.



Neihu

District Flower



Information contained in this publication is subject to change after release.

AD

# Highlight

## Around Bishan Temple

### Baishihu Agricultural Recreation Area

▶ Around Bishan Rd.

Strawberry season offers an opportunity to pick your own berries and savor creative dishes sourced from local produce. Popular attractions nearby are the Baishihu Suspension Bridge and the Heart Pond.



### Baishihu Suspension Bridge

▶ In front of Bishan Temple

Inspired by the surrounding mountains, this suspension bridge is shaped like a dragon's spine. From the Bishan Temple side, step onto the bridge as it leads you to ecological trails, strawberry fields, and scenic restaurants.



### Bishan Campground

▶ 26-6, Bishan Rd. ▶ (02)2759-8528

This mountain campground offers a diverse outdoor experience with a forest trail nearby. Be ready to be treated to Taipei's glittering nightscape under a canopy of twinkling stars.



# Food

### Xihu Shopping District

▶ Around Sec. 1 Huanshan Rd., Ln. 285 and Ln. 323 of Sec. 1 Neihu Rd.

Local office workers flock to this area for its diverse dining options, from noodles to adzuki bean cakes, steamed dumplings, and *xiaolongbao*. The shopping district is home to numerous bubble tea shops and hosts related annual events.



### Xihu Market

▶ 285, Sec. 1, Neihu Rd.

Integrated with MRT Xihu Station, the market mainly sells fresh produce on the first floor. The second floor, more like a food court, attracts food lovers with a wide variety of options, from international cuisine and fast food to traditional Chinese and Southeast Asian dishes.



### Bishan Temple

▶ 24, Bishan Rd. ▶ (02) 2790-0657

This temple is dedicated mainly to the Kai Zhang Sheng Wang deity. The square in front overlooks the Taipei Basin and Keelung River, and you can spot Taipei 101 and the Grand Hotel in the distance.



### Yuanjue Temple

▶ 39, Bishan Rd. ▶ (02) 2790-9868

This century-old temple mainly enshrines Sakyamuni Buddha, Amitabha Buddha, and Medicine Buddha. After visiting the temple and taking in its sweeping views of Taipei City, you can head to Yuanjue Waterfall, upstream of Dagou Stream, where scenic pavilions offer peaceful spots to admire the stunning boulders amid flowing water.



### Mt. Liyu (Carp Hill) Trail

▶ Trailhead: End of Ln. 131, Dahu St.

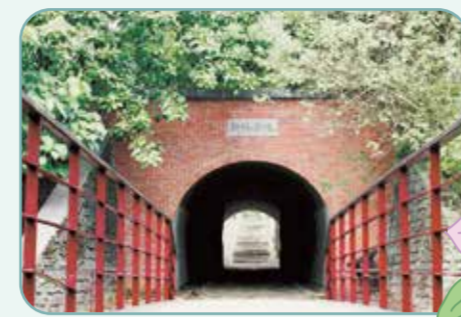
Along this trail, you'll see a collection of miniature sculptures of famous scenic spots, crafted by retired hikers. After your hike, you can explore nearby Yuanjue Temple and Yuanjue Waterfall.



### Xinfu Main Pit

▶ Ln. 131, Dahu St.

Get a glimpse of Neihu's coal mining history by going through a small mine tunnel. Inside, reconstructed carts and tracks are on display, allowing visitors to envision the underground history of Taipei.



### Dagouxi Ecology and Water-Control Park

▶ At the end of Dahu Shanzhuang St.

In this park, you can spot the purple crow butterfly and the Taipei tree frog, follow the trail along the stream, play by the water, and appreciate colorful blooming flowers throughout the seasons.



### Jinrui Flood Management Park

▶ Ln. 348, Sec. 3, Neihu Rd.

Taipei's first dragonfly-themed park showcases various dragonflies, butterflies, and birds like the common moorhen and white-breasted waterhen. It's a great place for family outing.

# Nature

### Bihu Park

▶ 175, Sec. 2, Neihu Rd.

Featuring fringe trees, willows, and other landscape plants, this park's circular trail allows you to enjoy the enchanting lakeside scenery. There are also hiking trails, a playground, and other recreational facilities.



### Dahu Park

▶ 31, Sec. 5, Chenggong Rd.

The Egret Lake in the park supports a rich waterbird ecology and features Chinese-style landscaping like the Moon Bridge and Nine-Bend Bridge, creating a distinctive scene against the surrounding nature.



### Bailusi Mountain Trail

▶ Trailhead: Ln. 35, Sec. 5, Chenggong Rd.

This winding yet gently graded path is lined with soapberry trees, ring-cupped oaks, and various other pristine vegetation. From near the top, you can enjoy a clear view over Dahu Park.



### Neigousi Ecological Trail

▶ End of Aly. 73, Ln. 61, Kangle St.

This trail invites visitors to experience riverside scenery from various scenic bridges and pavilions. Come early spring, the vibrant display of cherry blossoms transforms the area into a picturesque landscape.



### Jinmianshan Hiking Trail

▶ Trailhead: End of Ln. 136, Sec. 1, Huanshan Rd.

Being mildly challenging, the trail features a rock face terrain, including an old quarry used to supply Taipei's city walls. Take a break at Lunjian Pagoda midway before reaching Scissors Rock at the summit for a panoramic view of the city.



### Rainbow Riverside Park

▶ Right bank of Keelung River (between Minquan Bridge and Huandong Blvd.)

With its multiple sports courts and pump tracks, this park offers a wide range of outdoor activities. And the flowering season unveils beautiful flower fields, creating an ideal setting for leisure and recreation.



# Food

### Xihu Shopping District

▶ Around Sec. 1 Huanshan Rd., Ln. 285 and Ln. 323 of Sec. 1 Neihu Rd.

Local office workers flock to this area for its diverse dining options, from noodles to adzuki bean cakes, steamed dumplings, and *xiaolongbao*. The shopping district is home to numerous bubble tea shops and hosts related annual events.



### Xihu Market

▶ 285, Sec. 1, Neihu Rd.

Integrated with MRT Xihu Station, the market mainly sells fresh produce on the first floor. The second floor, more like a food court, attracts food lovers with a wide variety of options, from international cuisine and fast food to traditional Chinese and Southeast Asian dishes.



### Miacucina (Neihu Branch)

▶ 601, Ruiguang Rd. ▶ (02) 2659-3918

Discover a world of creative vegetarian dishes, including burgers and crepes, at this restaurant. Be sure to try the Balsamic Roasted Bell Pepper with Sunny Side Up Pasta, a surprisingly flavorful combo for a vegetarian experience.



### Xiang Shang Shi Pu

▶ 15, Aly. 22, Ln. 513, Ruiguang Rd. ▶ (02) 8752-5382

Featuring dishes like braised pork belly and pickled pepper flavor trotters, this restaurant offers a fresh take on Sichuan and Hakka cuisine, refining their typically robust flavors into lighter, more refined dishes to suit modern palates.

### FUN BAR (Neihu Flagship Store)

▶ 2, Ln. 360, Sec. 1, Neihu Rd. ▶ (02) 2799-5199

This establishment offers innovative Chinese dishes, including the Boiled Slice Pork and Cucumber with Garlic Sauce and the Dong Po Pork Served Oriental Beauty Tea, as well as Shanghai vegetable rice.



### AROS COFFEE

▶ 332, Lishan St. ▶ (02) 2799-6898

This café is well-known for its in-house roasted beans and its signature tiramisu latte. With the enticing addition of seasonal limited desserts, it's an ideal spot to savor both coffee and delectable bites.



### Neihu 737 Shopping District

▶ Around Gangqian Rd. and Ln. 737 of Sec. 1 Neihu Rd.

Near MRT Gangqian Station, this district offers a dual experience: a traditional market by day and a food hub at night. Gourmants are drawn to famous eateries like Da Chen Ji Traditional Noodles and Ji He Xi Soup Dumplings, as well as affordable and popular snacks such as pig's blood cake and sweet-potato balls.



### logy ★

▶ 39, Ln. 258, Ruiguang Rd.

Led by a Japanese head chef, their standout appetizer is *chawanmushi*: crabmeat steamed egg paired with Japanese angelica and celeriac mousse, finished with clear beef broth for a fresh, fragrant, and tender flavor.



### Yu Nai Chuan

▶ 15, Aly. 65, Ln. 71, Jiangnan St. ▶ (02) 7733-7559

Known for its Japanese aesthetic and thatched-roof seating, this shop is especially popular on Instagram. Their handmade tofu pudding, with toppings like taro balls and adzuki beans, comes in hot, cold, and also shaved ice versions.



### Zhan Curlee

▶ 64-1, Jinlong Rd. ▶ (02) 8791-0255

Known for its artisanal approach to Japanese curry, this restaurant offers a selection of specialized sauces. A standout favorite among patrons must be the exceptionally popular fried chicken curry.



# Tourist Spots

### Taipei Flower Market

▶ 28 & 36, Xinhua 3rd Rd. ▶ (02) 2790-9729

Divided into Hall A (fresh-cut flowers and gardening supplies) and Hall B (potted plants), this is Taiwan's largest flower wholesale market. It is open in the early morning only.



### Guo Ziyi Memorial Hall

▶ 19, Ln. 267, Wende Rd. ▶ (02) 2659-8787

During the Japanese era, this building served as the residence of the first village chief, Guo. It is a unique red-brick, T-shaped structure merging Chinese and Baroque elements. The interior displays the Guo family's cultural heritage.



### Winsing Art Place

▶ 6, Aly. 10, Ln. 180, Sec. 6, Minquan E. Rd. ▶ (02) 2790-2786

A unique blend of bookstore, café, and exhibition space, this place is centered around architecture and the city. It regularly hosts exhibitions by well-known artists like Hiroshi Sugimoto and Pierre Hughe.

