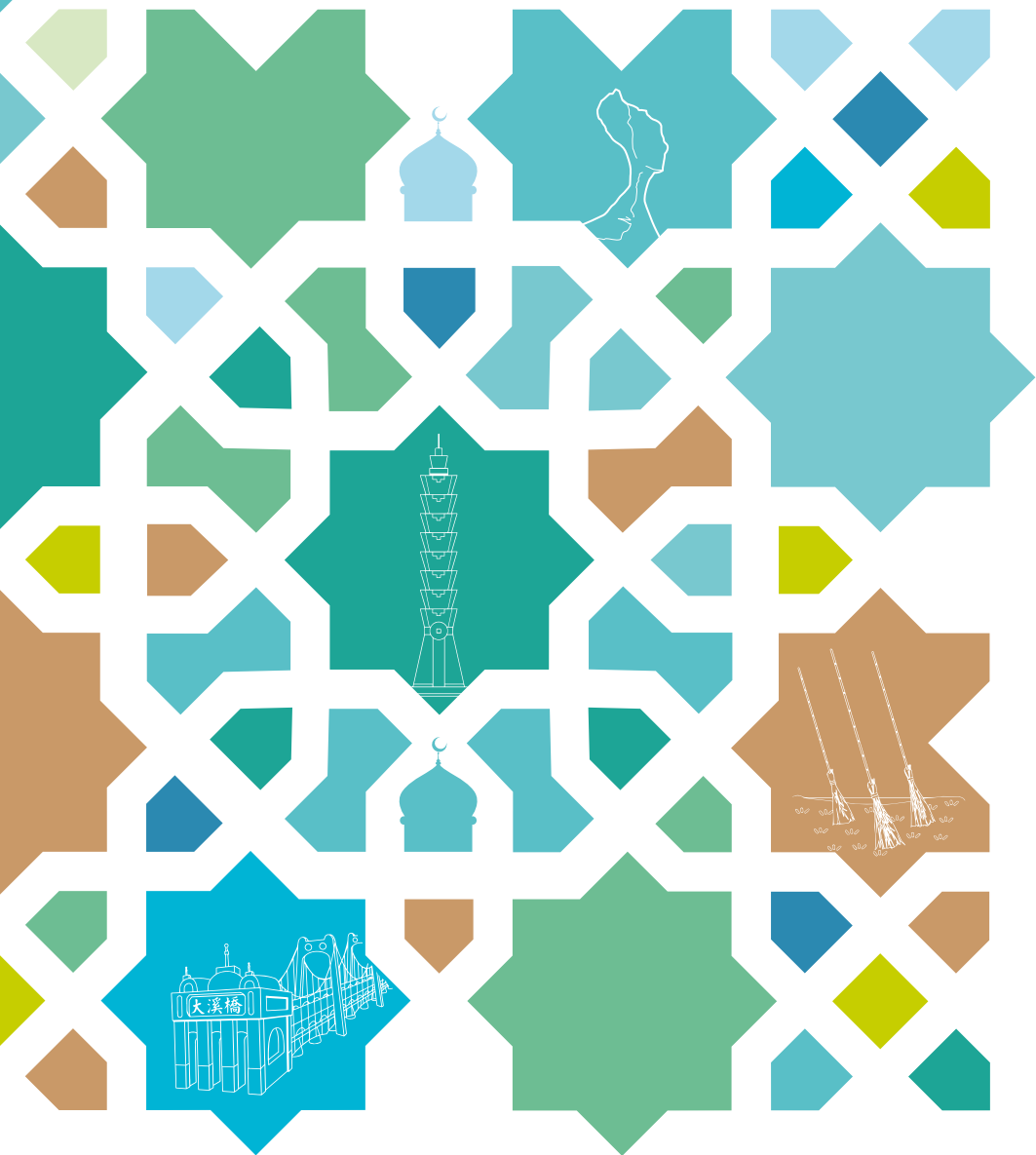


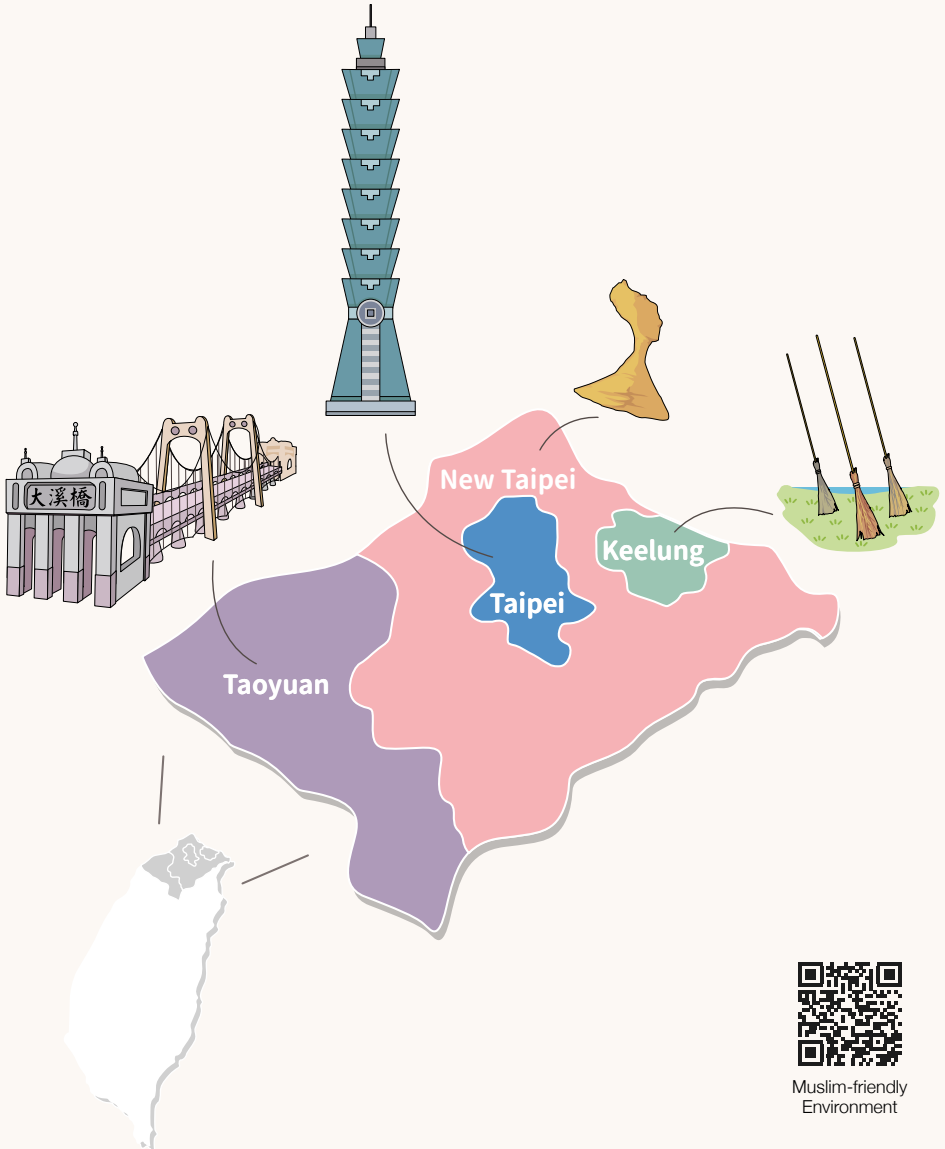
Guide to Muslim-friendly Travel in Northern Taiwan

Taipei, New Taipei, Taoyuan, Keelung



Northern Taiwan

A Muslim-friendly Tourist Destination



Muslim-friendly Environment

Taiwan has made significant strides in becoming more Muslim-friendly, transforming its public tourism spaces to better meet the needs of Muslim travelers. From purification facilities and prayer rooms to halal-certified restaurants and tailored events, these services are now widely available across the island, underscoring Taiwan's commitment to warmly welcoming Muslim visitors.

Since 2021, Taiwan has consistently ranked among the top Non-OIC destinations in the Global Muslim Travel Index (GMTI) and was ranked 4th in 2025. It was also honored as "Inclusive Destination of The Year (Non-OIC)" at the 2022 Halal in Travel (HIT) Awards. These achievements reflect Taiwan's dedication to Muslim-friendly tourism.

The four major cities in northern Taiwan — Taipei, New Taipei, Taoyuan, and Keelung — are popular destinations for travelers worldwide, each offering unique attractions. Taipei City blends urban vibrancy with rich cultural heritage and annually hosts "Eid-al-Fitr in Taipei" to celebrate this meaningful occasion with Muslim friends; New Taipei City presents stunning natural scenery, with access to both mountains and seaside in one day; Taoyuan City, the international gateway, offers a rich combination of cultural and natural beauty; and Keelung City, with its bustling port, boasts breathtaking ocean views and fresh seafood.

Together, these four cities offer extensive Muslim-friendly facilities, halal options, and thoughtfully crafted travel itineraries, ensuring that Muslim visitors can relax and enjoy northern Taiwan with peace of mind.



Taipei City

As the capital of Taiwan and a renowned international tourist destination, Taipei City is committed to creating a Muslim-friendly environment. Recognized for these efforts, Taipei was honored "Most Promising Muslim-friendly City Destination of The Year (Non-OIC)" at the 2023 HIT Awards and in 2025, it was named the "Muslim Women-friendly City Destination of the Year". For first-time visitors, the following attractions provide an excellent introduction to exploring Taipei's vibrant culture and unique charm.



Halal Travel
Guide



1 Taipei 101



Taipei 101 is a must-visit landmark in Taipei's main commercial area. It includes a shopping mall and stands as one of the tallest buildings in Taiwan. Taipei 101 Observatory on the 89th floor provides a 360° panoramic indoor view, while visitors can also take stairs to the outdoor deck on the 91st floor. For an even higher vantage point, the Skyline 460 on the rooftop offers stunning views of the city and sky. Each year, the Taipei 101 New Year's Eve Fireworks Show captivates audiences worldwide, renowned as a spectacular display to ring in the new year.

- 📍 45, City Hall Rd., Xinyi Dist., Taipei City (Mall)
- ☎ (02)8101-8800



2 Taipei Zoo



From Taiwan's native species, such as the Formosan black bear, leopard cat, and pangolin, to animals from around the world, Taipei Zoo offers memorable up-close encounters. The zoo also provides visitor-friendly services, including a Muslim prayer room and a scenic shuttle train. It's a popular destination for getting close to animals and exploring nature.

 30, Sec. 2, Xinguang Rd., Wenshan Dist., Taipei City
 (02)2938-2300 ext.630



3 Maokong Gondola

The Maokong Gondola links several popular attractions, including Taipei Zoo, Camphor Tree Trail, Maokong, and Zhinan Temple. The crystal cabins with transparent floors offer all-around views of the city and surrounding mountains. Lush greenery lines the entire route, and at the final stop, visitors are welcomed by the aroma of tea and local delicacies.

 8, Sec. 2, Xinguang Rd., Wenshan Dist., Taipei City
 (02)8661-8110

4 National Chiang Kai-Shek Memorial Hall



National Chiang Kai-Shek Memorial Hall consists of three main areas: a lush park with seasonal blossoms, a spacious square popular for cultural events and leisure activities, and the grand main building. Outside the main building, visitors can observe the solemn hourly changing of the honor guard. Flanking the square are the National Concert Hall and the National Theater, both of which are major cultural landmarks in Taipei.

📍 21, Zhongshan S. Rd., Zhongzheng Dist., Taipei City
☎ (02)2343-1100

5 Bopiliao Historic Block



Bopiliao Old Street preserves the urban planning from the Qing Dynasty, architectural styles from the Japanese era, and structures from the post-war period. It also retains traditional Taiwanese street layouts, with simple yet elegant street houses that once hosted hotels, altars, boat supply shops, and teahouses. Today, this unique area serves as a lively hub for Taiwanese art and culture, regularly hosting exhibitions and events, and is a popular filming location for movies and dramas due to its distinctive historical charm.

📍 Ln. 173, Kangding Rd., Wanhua Dist., Taipei City
☎ (02)2302-3199



6 Taipei Arena



More than just an iconic venue for concerts and sporting events, Taipei Arena also offers a wide range of recreational facilities, including an ice rink, gym, dance studios, and squash courts — plus plenty of dining options. There is also a Muslim prayer room.

📍 2, Sec. 4, Nanjing E. Rd., Songshan Dist., Taipei City
☎ (02)2578-3536



7 Guandu Nature Park

This natural wetland is an important habitat for migratory birds. The park regularly hosts themed exhibitions, weekend lectures, hands-on DIY workshops, and other environmental education activities centered on wetland ecology. Visitors can observe a variety of aquatic life, including water birds, frogs, fiddler crabs, and diverse wetland plants.

🏠 55, Guandu Rd., Beitou Dist., Taipei City
☎ (02)2858-7417

8 Zhuzihu Recreational Agricultural Area

Nestled in Yangmingshan National Park, Zhuzihu is famous for its colorful flower farms. From March to April, the area comes alive with blooming calla lilies, inviting visitors to pick flowers, capture enchanting moments, and immerse themselves in the scenic landscape. In May and June, the hydrangea farms provide another delightful floral display.

Datitian Flower Farm

🏠 33-7, Zhuzihu Rd., Beitou Dist., Taipei City
☎ 0917-639-349

Blhhr Farm

🏠 Calla Lily Avenue, Zhuzihu Rd., Beitou Dist., Taipei City
☎ (02)2861-5736

Jaifu Garden

🏠 Near 68, Zhuzihu Rd., Beitou Dist., Taipei City
☎ 0928-624-802

Tsao's Wonderland

🏠 Beside 33-7, Zhuzihu Rd., Beitou Dist., Taipei City
☎ (02)2862-5886



9 Shilin Residence Park

Shilin Residence Park is an urban oasis that blends historical charm with natural beauty. It features the Presidential Residence, expansive green spaces and gardens. Among its highlights are the year-round blooming Rose Garden and a tropical plant greenhouse. The scenic bridge and traditional Chinese pavilion add a poetic touch, making it a perfect spot for relaxation and leisurely strolls.

🏠 60, Fulin Rd., Shilin Dist., Taipei City
☎ (02)2881-2912

10 Taipei Children's Amusement Park



This small but well-equipped park offers 13 play facilities, including a Ferris wheel, bumper cars, a carousel and more. These rides strike the perfect balance between excitement and safety, making them ideal for children. The park also has an indoor play area for families, ensuring enjoyment in any weather. With diverse activities focused on education and nature exploration, along with a food court, it offers a fun and engaging experience for visitors of all ages.

🏠 55, Sec. 5, Chengde Rd., Shilin Dist., Taipei City
☎ (02)2833-3823 ext.105/106

11 Kuo Yuan Ye Museum of Cake and Pastry



The museum displays the history and utensils of Kuo Yuan Ye Foods company and introduces the evolution of Taiwan's traditional pastry industry. It also provides insights into Taiwanese wedding and funeral customs. The museum is the place to learn about Taiwanese pastries, and visitors can purchase popular souvenirs such as pineapple cakes and cookie gift boxes.

🏠 4F, 546, Wenlin Rd., Shilin Dist., Taipei City
☎ (02)2838-2700 ext.457



12 Zhishan Cultural and Ecological Garden



Zhishanyan encompasses remains from seven cultural strata spanning 6,000 years, making it a veritable archaeological site. Visitors can explore fossil displays, models, and exhibits that offer a glimpse into the lives of ancestors, as well as Zhishan's natural ecology and geological landscape. Outside the exhibition hall, the natural plank pathway offers a serene stroll through lush greenery, enhancing the overall experience.

🏠 120, Yusheng St., Shilin Dist., Taipei City
☎ (02)8866-6258

13 National Palace Museum (Northern Branch)



The museum houses the world's largest collection of Chinese art treasures, with nearly 700,000 pieces spanning thousands of years. The three must-see pieces are the Jadeite Cabbage, Meat-shaped Stone, and Mao Gongding. Embracing new media, the museum offers online access to its valuable and rare cultural relics, while exhibitions incorporate technology to enhance the viewing experience, bringing the collection's highlights to life for every visitor.

📍 221, Sec. 2, Zhishan Rd., Shilin Dist., Taipei City
☎ (02)2881-2021

14 National Taiwan Arts Education Center



Located within the Nanhai Academy campus, it was built in the 1950s and exemplifies a post-war Neo-Chinese architectural style. It regularly hosts art exhibitions and activities. The center features dedicated areas such as a painting zone, an interactive projection area, and a storytelling zone; here, visitors can experience the charm of art and aesthetic exploration.

📍 47, Nanhai Rd., Zhongzheng Dist., Taipei City
☎ (02)2311-0574



15 Baishihu Recreational Agricultural Area



This area is a prominent leisure agriculture base in Taipei City. The farms cultivate a variety of seasonal vegetables and fruits such as strawberries, cabbage, radishes, and herbs, available for visitors to pick. The area also features DIY workshops where participants can make cookies, herbal teas, and traditional foods.

Whiterock Organic Farm 🏡

📍 50, Bishan Rd., Neihu Dist., Taipei City
☎ 0981-992-688

New Taipei City

New Taipei City is large in area, and is the northernmost city in Taiwan. With a coastline stretching more than 120 kilometers, it has abundant coastal and fishing harbor scenery, as well a branch of the Xue Mountain Range and the Datun Mountain System, offering both mountain and coastal landscapes beyond its urban areas and some of the best travel routes in northern Taiwan.



1 Laomei Green Reef

Once hailed by CNN as one of Taiwan's eight wonders, vibrant green algae covers the reef in a dreamlike green carpet here every spring, attracting many keen photographers and tourists. The nearby Baisha Bay Visitor Center not only offers tourist information and services but also features Muslim-friendly facilities.

📍 26.3 km of Provincial Highway No. 2, Laomei Community, Shimen Dist., New Taipei City

2 Jinshan Old Street



Also known as Jinbaoli Old Street, Jinshan Old Street has a 300-year history. It is renowned for its traditional Taiwanese foods and snacks made from sweet potatoes and water bamboo, offered by various restaurants and street vendors. Visitors can also enjoy Jinshan hot springs or explore the scenic Yulu Old Trail for a closer connection to nature. The nearby Jinshan Visitor Center conveniently provides Muslim-friendly facilities.

📍 Jinbaoli St., Jinshan Dist., New Taipei City

3 Yehliu Geopark



Yehliu Geopark's rare and varied geological formations make it a natural geology classroom and a world-renowned must-see attraction. Situated on Yehliu Cape, the park features a stunning collection of uniquely shaped rocks, including the iconic Queen's Head and Fairy's Shoe, each a masterpiece of natural erosion and weathering.

📍 167-1, Gandung Rd., Wanli Dist., New Taipei City
☎ (02)2492-2016



4 Jiufen



Jiufen, a former gold mining town known as the "Golden Mountain City," gained fame as the setting for the acclaimed late 1980s movie *A City of Sadness*. Its winding stone steps are lined with charming teahouses and shops, creating a picturesque mountain retreat that attract both domestic and foreign tourists. Travelers can savor traditional snacks and collect unique souvenirs while enjoying the iconic views of this historic town.

📍 Jishan St., Ruifang Dist., New Taipei City



5 Houtong

The Houtong area, once a thriving center of Taiwan's coal mining industry, retains some rich mining relics such as shafts and trolleys. Visitors can ride a trolley through a tunnel for a unique coal mining experience. Near Houtong Railway Station is the well-known "Houtong Cat Village," named by CNN as one of the world's top six destinations for cat lovers. This delightful village draws visitors with its charming blend of history and feline appeal.

🏠 The area around Houtong Railway Station

6 Sandiaoling Eco-friendly Tunnel

Formerly a tunnel on the old Yilan Line, it is an ecological tunnel with a length of 3.19 kilometers. The design of the pool at the tunnel entrance creates a beautiful reflection. Inside the tunnel, visitors can enjoy perfectly preserved history and natural ecology, such as stalactites formed over time, and the traces left by steam trains as well as roosting bats.

🏠 Sandiaoling, Ruifang Dist., New Taipei City

☎ (02)2493-3782

🌐 Reservations must be made in advance on the website

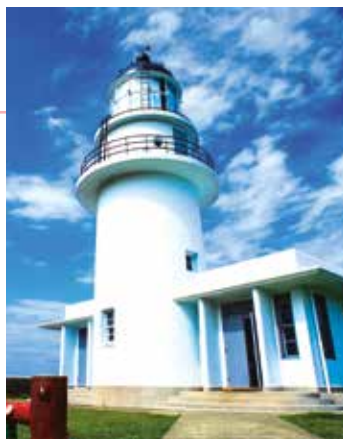


7 Sandiaojiao Lighthouse

Situated at Taiwan's easternmost point, this lighthouse is the first place to witness the sunrise on the main island. The pure white lighthouse building, along with a Greek-style pavilion, domed chapel and heart-shaped art installation, exudes a sweet and romantic atmosphere that attract many couples. Additionally, the nearby Fulong Visitor Center provides Muslim-friendly facilities.

🏠 38, Magang St., Gongliao Dist., New Taipei City

☎ (02)2499-1300



8 Tamsui Fisherman's Wharf



Located at the mouth of the Tamsui River, Fisherman's Wharf is renowned for its magnificent sunsets. Highlights include the timber trestle bridge pier, the spacious harbor park, and Lover's Bridge, famed for its scenic views and illuminated night lights. Visitors can savor seafood at the local fish market and shop for souvenirs along the commercial streets, making it an enjoyable day and night experience.

🏠 199, Guanhai Rd., Tamsui Dist., New Taipei City

9 Guanyinshan & Visitor Center



Guanyinshan is an ecological park combining environmental education with conservation efforts and is a prime spot for observing migratory birds of prey. Along the hiking trail to the top of Yinghanling (Tough Man Peak), visitors can enjoy a bird's eye view of the winding Tamsui River flowing into the sea, with bustling scenes of the Taipei Basin in the distance. In addition, the visitor center offers Muslim-friendly facilities, ensuring a welcoming experience for all.

🏠 130, Sec. 3, Lingyun Rd., Wugu Dist., New Taipei City 📞 (02)2292-8888



10 Mitsui Outlet Park Linkou



Mitsui Outlet Park Linkou is the largest shopping and leisure complex in northern Taiwan. With its resort-like spaciousness and an array of boutiques, this super-high end shopper's paradise will definitely make you want to linger. At Mitsui Outlet Park Linkou, all your shopping, leisure and dining needs can be met at once.

🏠 356, Sec. 1, Wenhua 3rd Rd., Linkou Dist., New Taipei City
📞 (02)2606-8666

11 Wulai

A well-known picturesque indigenous mountain settlement in northern Taiwan, Wulai is famous for its hot springs, logging industrial trolleys, waterfalls and Yun Hsien Resort. For a pleasant experience, take a cable car to view Wulai Waterfall, hop on the Wulai Tour Minitrain to enjoy the mountain scenery, or get close to nature with a hot spring bath.

🏠 Wulai Dist., New Taipei City



Taoyuan City

Taoyuan City is the gateway to Taiwan for most international visitors. With a rich blend of ethnic diversity and cultural heritage, it is a city with a long history, modern development and a global outlook. The area's Hakka culture, military dependents' villages, rural village life, industrial experiences, irrigation lakes and mountain forests all serve as a microcosm of Taiwanese life and culture.



1 Shimen Reservoir

Shimen Dam stands at an impressive 133 meters high — magnificent whether viewed from the top looking down or gazing up from the base. The surrounding park is shaded with lush trees, featuring cherry blossom in spring and maple foliage in autumn. Visitors can also take a boat tour around the lake. Every December, the popular annual event "Taoyuan Half Marathon Shimen Reservoir Half Marathon," is held here, attracting many participants.

🏠 68, Sec. 1, Huanhu Rd., Daxi Dist., Taoyuan City
☎ (03)471-2000

2 Hengshan Calligraphy Art Center



This is a museum dedicated to the art of calligraphy, with a design that harmoniously integrates with its surrounding landscape. The park layout represents an inkstone, with the pond symbolizing its ink, beautifully merging nature and culture. The themed building cluster has a unique design resembling Chinese seals and has become one of Taoyuan's most popular tourist attractions.

🏠 100, Daren Rd., Dayuan Dist., Taoyuan City
☎️ (03)287-6176

3 Xpark

The park features 13 different exhibition areas including the eye-catchingly huge aquarium, which holds a variety of fish species, the Healing Jellyfish area with color changing effects and the Penguin Life area. These beautiful, dreamlike landscapes have made this a popular spot for visitors to check in and take selfies.

🏠 105, Chunde Rd., Zhongli Dist., Taoyuan City
☎️ (03)287-5000



4 Xiao Wulai Scenic Area



Step onto Xiao Wulai Skywalk, suspended 70 meters in the air, for a thrilling view of the majestic Xiao Wulai Waterfall rushing directly beneath. Visitors can also stroll across Sky Rope Bridge to enjoy the tranquility of the mountain forest. The area also features an open-air stream hot spring, and in summer, a designated water-play zone lets visitors to cool off while wading in the refreshing stream.

🏠 4-6, Xiayunei, Yisheng Village, Fuxing Dist., Taoyuan City
☎️ (03)382-1835

5 Taoyuan Lotus Blossoms

Every summer, the lotuses in the fields of Guanyin and Xinwu bloom, bursting with color. Visitors can admire the blossoms and enjoy special lotus-themed cuisine that's sure to work up an appetite. For a unique experience, try sitting on a Giant Water Lily – one of the most popular and photo-worthy attractions.

🏠 Guanyin & Xinwu Dist., Taoyuan City



6 Gloria Outlets

The leisurely shopping atmosphere of the first American-style open-air shopping center in Taiwan makes people feel like they are actually shopping overseas. It brings together hundreds of international brands spanning fashion, quality home products, health and sustainability, as well as a range of restaurants serving delicious cuisine.

🏠 189, Chunde Rd., Zhongli Dist., Taoyuan City
☎ (03)273-8666



7 Window On World

The first amusement park in Asia with the theme of miniature architectural models. It has hundreds of world-famous buildings, built perfectly to the scale of 1:25. Here, visitors can easily visit Taiwan, China, Asia, Europe and the Americas, the entire world, in fact. This theme park also includes an indoor amusement area, fun parades and performances, as well as various recreational facilities, making it ideal for a family day out.

🏠 891, Gaoyuan Rd., Longtan Dist., Taoyuan City
☎ (03)471-7211



8

Daxi Old Street

The old street's houses display classical architectural styles, especially the combination of Baroque ornamentation and traditional Minnan (southern Fujian) decorative patterns, which is a unique feature of Daxi Old Street. The streets are lined with specialty shops and restaurants, where visitors can enjoy traditional Taiwanese snacks such as Daxi Dried Tofu, and play with old-time fashioned Taiwanese children's toys.

🏠 Zhongshan Rd. & Heping Rd., Daxi Dist., Taoyuan City



9

Taiwan Hakka Tea Culture Museum



The museum's core themes are Hakka tea culture and the history of the tea industry. Visitors can experience the distinct tea flavors of six different countries, including Britain, Turkey, Taiwan, and Japan. The museum also offers various DIY activities, such as tea picking, making tea bags, tea soap, tea balls, tea pillows, and Hakka Lei Cha (pounded tea).

🏠 768, Gaoyuan Rd., Longtan Dist., Taoyuan City
☎ (03)471-0855

10

Lala Mountain National Forest Recreation Area



The area offers a nature therapy retreat within a cypress forest, famously known as Lala Mountain Giant Trees. The circular trail, set at an altitude of 1,500 to 2,130 meters, leads visitors through clouds and mist, unveiling 24 giant trees aged 500 to 1,495 years old. Before entering the area, visitors pass the Visitor Center, Butterfly Hall, and Beetle Hall, immersing themselves in a refreshing and rejuvenating natural escape.

🏠 205, Neighborhood 11, Hualing Village, Fuxing Dist., Taoyuan City
☎ (03)391-2142



Keelung City

Keelung, a vibrant port city at the northern tip of Taiwan, has long been shaped by its deep connection to the ocean and its bustling harbor. Its dynamic fish markets and restaurants offer fresh, locally sourced delicacies. In recent years, international cruise ships have revitalized the city's role as an ocean hub connecting Taiwan to the world, enriching its diverse culture and international character.



1 Zhengbin Fishing Harbor Colorful Houses

Zhengbin Fishing Harbor is an old fishing harbor with a long history, located to the south of Heping Island. The colorful old houses along its waterfront have brightened up the area visually and made Zhengbin a popular check-in spot on social media. The harbor's charming atmosphere, reminiscent of Burano in Italy, has revived the harbor's status as a tourist attraction, breathing new life into this historically significant site.

🏠 Zhengbin Rd., Zhongzheng Dist., Keelung City

2 Fortress Headquarters



This historic building, completed in 1929, once served as the highest military command center in northern Taiwan. Despite over 90 years of exposure to wind and rain, it remains remarkably well-preserved. After being restored and tidied up, it fully retains its original character as a Western-style government office building from the Japanese era. It has become a new cultural, leisure and creative art base in Keelung City.

🏠 46, Xiangfeng St., Zhongzheng Dist., Keelung City
☎ (02)2422-4170 ext.356

3 Heping Island Park

The coastal rock formations have been shaped by long-term sea and wind erosion on the windward side, creating a special landscape with landforms such as sea erosion platforms, tofu rocks, and mushroom rocks. Alongside the impressive terrain, Heping Island also reveals geological treasures in the form of exposed fossils. Prebooking tours are required for access to protect these precious geological assets.

🏠 360, Pingyi Rd., Zhongzheng Dist., Keelung City
☎ (02)2463-5452



4 Bisha Fishing Port



Bisha Fishing Port, a renowned tourist fish market, offers a diverse selection of fish and seafood. On the adjacent restaurant street, visitors can either dine in or have restaurants prepare seafood purchased from the market. The port also serves as a yacht marina, providing travelers with the opportunity to admire these elegant vessels, explore the surroundings, and capture memorable photos.

🏠 Beining Rd., Zhongzheng Dist., Keelung City

5 National Museum of Marine Science & Technology



This museum features the Main Exhibition Building with permanent exhibits, the Ocean Theater, and the Regional Exploration Building. In Chaojing Area, the newly established i-OCEAN, equipped with advanced 3D tech, allows visitors to personally explore the ocean alongside schools of fish, fully immersed in its varied wonders.

📍 367, Beining Rd., Zhongzheng Dist., Keelung City
☎ (02)2469-6000

6 Chaojing Park

This is an ideal spot to savor stunning sea views of Keelung Islet and Jiufen, and the diverse intertidal ecology makes it perfect for family outings. The park is known for its expansive grassy area adorned with captivating installation art by French artist Patrick Demazeau — a popular social media hotspot. It also has a bicycle path and a scuba diving spot. Visitors can leisurely stroll to appreciate the scenery or enjoy a breezy cycling experience.

📍 Ln. 369, Beining Rd., Zhongzheng Dist., Keelung City
☎ (02)2469-6000



7 Badouzi Railway Station

Badouzi Railway Station, located on the Taiwan Railway Corporation's Shenao Line, is a small, unmanned station without a main building. Magnificent sea views can be seen in front of the station, making it a popular photography spot for tourists. The nearby Wanghaixiang Fishing Harbor Scenic Bridge is a good place to enjoy sea views while walking.

📍 119, Sec. 2, Jianji Rd., Ruifang Dist., New Taipei City





Mosque Information

Northern Taiwan has four mosques for Muslim worship.

Taipei Grand Mosque

🏠 62, Sec. 2, Xincheng S. Rd., Daan Dist., Taipei City

☎ (02)2321-9445

Taipei Cultural Mosque

🏠 3, Ln. 25, Sec. 1, Xinhai Rd., Zhongzheng Dist., Taipei City

☎ (02)2367-5421

Longgang Mosque

🏠 216, Longdong Rd., Zhongli Dist., Taoyuan City

☎ (03)456-1234

Da Yuan Masjid At-Taqwa Mosque

🏠 8-2, Zili 1st St., Dayuan Dist., Taoyuan City

☎ (03)384-0539



Dining & Accommodation Information

In Northern Taiwan, a diverse array of halal-certified restaurants caters to various culinary preferences. These establishments offer a wide range of cuisines, including local Taiwanese favorites like beef noodles, South and Southeast Asian delights such as Indian, Malay, and Indonesian dishes, and even specialties from Moroccan, Pakistani, and Turkish cuisine.

Hotels in the region go the extra mile to accommodate Muslim guests by providing thoughtful amenities, such as prayer mats, Qibla direction indicators, electronic bidet toilets or purification facilities, and suitable breakfast options. Employees will also undergo professional education and training to enhance their services, ensuring a warmly welcoming experience for Muslim travelers.

For more details, please refer to the Taiwan Tourism Administration website.



Dining and
Accommodation

Legend

- BR Wenhu Line
- R Tamsui-Xinyi Line
- G Songshan-Xindian Line
- O Zhonghe-Xinlu Line
- BL Bannan Line
- Y Circular Line
- Maokong Gondola
- Airport
- HSR
- TR
- Taoyuan Airport MRT
- V Danhai LRT
- K Ankeng LRT



Travel Information

Taipei Travel

www.travel.taipei/en

New Taipei City Travel

newtaipei.travel/en

Taoyuan Tourism

travel.tycg.gov.tw/en

Keelung Travel

travel.klcc.gov.tw/en/

24/7 Toll-Free Travel Information Hotline

Tourism Administration, MOTC : 0800-011-765

Foreigners In Taiwan Hotline : 1990



Transportation Information

Taiwan Railway

(02)2191-0096

tip.railway.gov.tw

Taiwan High Speed Rail

(02)4066-3000

en.thsrc.com.tw

Metro Taipei

(02)218-12345 (24/7 Customer Service)

english.metro.taipei

Metro Taoyuan

(03)286-8789

tymetro.com.tw/tymetro-new/en

Taiwan Tourist Shuttle Service

taiwantrip.com.tw/Frontend/Home/Index_en

Taipei Fun Pass

funpass.travel.taipei

Photos partially provided by: New Taipei City Government, Taoyuan City Government, and Keelung City Government

